

How To...

[%ođ'œ"x,ì•ïX](#)

[fJ\[\[f\<,ìF,ì•ïX](#)

[•\Ž|^Ê'u'²@](#)

[fŠftfœfbfVf...fœ\[\[fg,ì•ïX](#)

[fKf“f}“Á<,ì•ïX](#)

[-³⁄₄,é,³,ì•ïX](#)

[fRf“fgf%ofXfg,ì•ïX](#)

Total3D™ On-Line Manual

TOTAL



Total3D™ Vérité™ Graphics Accelerator Card,É,Â,ç,Ä

fnfCfXfLfff“3DfS□[fOf<,iŽg,ç•û

3D Stereo Sound ,iŽg,ç•û

fgf%°fuf<fVf...□[fefBf“fO

•â'«

Total3D™ Vérité™ Graphics Accelerator Card,É,Â,ç,Ä

Total3D,Ö,æ,æ,±,»|

^ê"É,ÿffBfXfvfCfCfAf_fvf^,ÍfRf"fsf...[f^["à•",ÿffWf^f<M+ ,ðf,ÿf^["É,É•\Z|,·,é,¾,¯,Ä,·,ªA,±, Ì Total3D ,Í,»,ê,É%Á,Ì,Ä%º,É, °,é,æ,æ,É½,,Ì"Á•É,È<@"\,ð"ð,Ì,Ä,ç,Û,·B

Total3D ,ÿffBfXfvfCfC,ÉŠÖ,·,é<@"\,ðCPU,É'ä,í,Ä,Ä^ø,«Žó,¯,Û,·|,»,)•ª-{ 'ì,ÿpf|,ðfvfOf %f€,âfQ[f€,É"-,Ä,é,±,Æ,ª,Ä,«,Û,·B
2D•\Z|,âpf|[fAfbfv,µ,Û,·|, "ŽèŽ,ÿ,ÿpf\frf",ì%ð'œ"x,âF" AfŠftfCfbfvf...
fC[f,âftfC[f€fC[f,ðfCfxf<fAfbfv,·,é,±,Æ,ª,Ä,«,Û,·B
,à,ÿ,è,ñ3DfvfOf%f€,âfQ[f€,àŠy,µ,ß,Û,·|, ,É,½,ÿpf\frf",Ä3D,ÿftfC[f€,
,âfefNfXf' ff[,ðZACE»,µAÄV,ÿQ[f€,É,à'ì%ž,µ,Ä,ç,Û,·B

Total3D,ÌY'è

Total3D,ðfCf"fxfg[f<,µY'è,ðs,ÿ,ÌACEä,ÿOf%ftfBfbfNfAfNfZf%fC[f^<@"\,ªŽ©"®"l,É",,æ,æ, É,É,è,Û,·B,³,ç,É, "D,Y,É±,í,¹,ÄA,ç,,Ä,©,ÌY'è,ð,·,é,±,Æ,ª,Ä,«,Û,·B

%ð'œ"x,ÆF",ì·ìX
fŠftfCfbfvf...fC[f,ì·ìX
Gamma"Ä<,ì·ìX
-¾,é,³,Ì²®
fRf"fgf%ofXfg,Ì²®
•\Z|^É'u,Ì²®
f|[f<,ÌF,ì·ìX

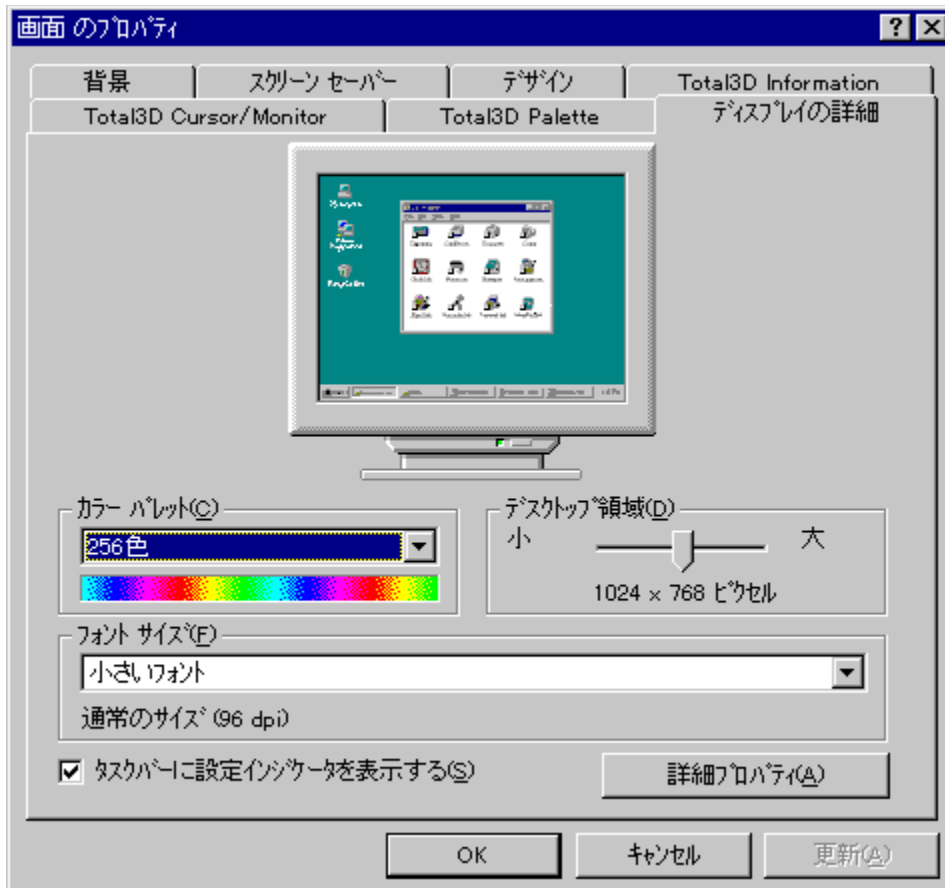
fgf%ofuf<fvf...[fefBf"fo

-â'è,ª<N,«,½,Æ,«,É,ÌA,Û,,±,ÿ}ÿÿ...fAf<,ì fgf%ofuf<fvf...[fefBf"fo ,ðŽQÆ,µ,Ä,,¾,³,çB,»,± ,Ä%ðCE^,Ä,«,É,çê±,É,ÿefNÿÿÿ<fTf|[fg,É~A-µ,Ä,,¾,³,çBfefNÿÿÿ<fTf|[fg,Ì~A-
|æ,ÌuSupport Service Manualv,Ìu ft|[fU|[fTf|[fg,É,Ä,ç,Äv,ð,²—,¾,³,çB

•â'«

Total3D,ÌŽd—l,ÉŠÖ,·,é,±,Æ,É,Ä,ç,Ä,ÌA,±,ÿ}ÿÿ...fAf<,ì â'«,Ì€ ,ð,²—,¾,³,çB

画面のプロパティ



画面のプロパティ

1. fRf"fgf[f:fpflf<,ig%æ-Êh,ðNfŠfbfN,μ,Û,·B
2. gffBfXfvfEfC,ìU×h,ìgffXfNgbfv-îæh,ífXf%ofCfhfo[.ð^Ú"®,μ,Ä,,¾,¾,çB
-, ,é,ç,í-

1. f^fXfNfo[.ìTotal3D fRf"fgf[f:fAfCfRf",ðNfŠfbfN,μ,Û,·B
2. Žw'è,μ,½,ç%æ"x,ÆF",ðNfŠfbfN,μ,Û,·B

画面のプロパティ

1. fRf"fgf[f:fpflf<,ig%æ-Êh,ðNfŠfbfN,μ,Û,·B
2. gffBfXfvfEfC,ìU×h,ìgff%[fpfEfbfgh,ÅD,Ý,ìF",ðŽw'è,μ,Ä,,¾,¾,çB
-, ,é,ç,í-

1. f^fXfNfo[.ìTotal3D fRf"fgf[f:fAfCfRf",ðNfŠfbfN,μ,Û,·B
2. Žw'è,μ,½,ç%æ"x,ÆF",ðNfŠfbfN,μ,Û,·B

画面のプロパティ



画面のプロパティ

Total3D Cursor/Monitor

画面のプロパティ

1. Total3D Cursor/Monitor
2. Total3D Cursor/Monitor
3. Total3D Cursor/Monitor
4. Total3D Cursor/Monitor
5. OK

Windows95 Plus! Total3D Cursor/Monitor

• \\Z!^Ê'u,ì'²□®



• \\Z!^Ê'u,ì'²□®,É,Â,ç,Ä

Total3DfOf%oftfBfbfNfc□[f<,ðŽg,Á,Ä□Af,fjf^□□ã,É•\\Z!,³,ê,é%œ-Ê,ì^Ê'u'²□®,ð□s,±,Æ,ª,Ä,«,Ü,·□B

• \\Z!^Ê'u,ì'²□®□F

1. fRf''fgf□□[f<fpflf<,ì□g%œ-Ê□h,ðfNfŠfbfN,μ,Ü,·□B
2. □gTotal3D Cursor/Monitor□hf^fu,ðfNfŠfbfN,μ,Ü,·□B
3. •\\Z!^Ê'u'²□®f{fbfNfX,ì-î^ó,ðfNfŠfbfN,·,é,±,Æ,É,æ,Á,Ä□ã%œ□□¶%œE,É%œ-Ê,ª^Ú''@,μ,Ü,·□B^ê%œñfNfŠfbfN,·,é,Æ,».,ì•ùCEü,É□''fsfNfZf<^Ú''@,μ,Ü,·□B
4. CE³,ì^Ê'u,É-ß,μ,½,ç,Æ,«,É,í□A't□S,ìŽİšp,ìf{f^f'',ðfNfŠfbfN,μ,Ä,,³/4,³,ç□B
5. OK ,ðfNfŠfbfN,μ,Ü,·□B

画面のプロパティ



画面のプロパティ

Total3Dのインストールディレクトリを指定し、画面のプロパティを調整します。

画面のプロパティ

1. 画面のプロパティを開く。
2. Total3D Cursor/Monitorを選択する。
3. Total3D Paletteを選択する。
4. 表示位置・周波数調整で、リフレッシュレートを75Hzに設定し、Testボタンをクリックする。
5. OKボタンをクリックする。
6. Total3D Drivers and Applications CD-ROMを挿入し、T3dutil.exeftを実行する。

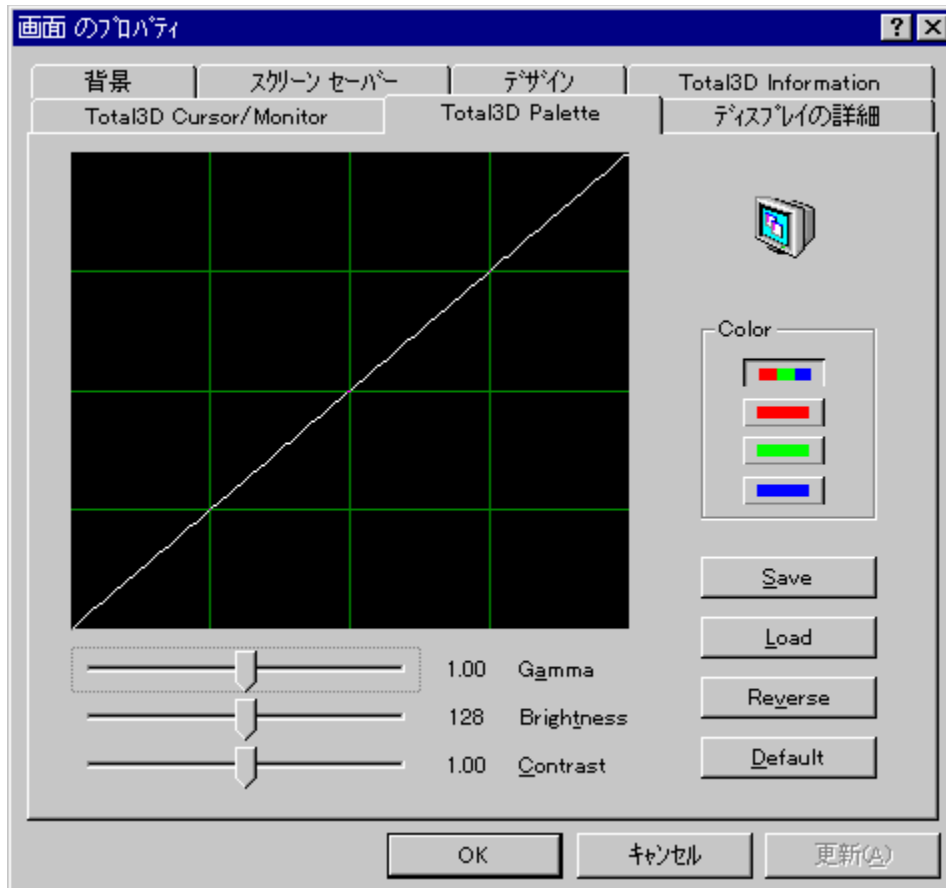
DOS画面のプロパティ

1. DOS画面のプロパティを開く。
2. T3dutil.exeftを実行する。

640 x	480	60	60	75	75	85	85	85	85	85	85	85	85	85	85	85	85	85
720 x	480	60	60	60	60	60	60	60	60	60	60	60	60	60	60	60	60	60
768 x	576	60	60	60	60	60	75	75	75	75	75	75	75	75	75	75	75	75
800 x	600	60	60	60	60	60	75	75	75	75	85	85	85	85	85	85	85	85

Example: t3dutil /r1	640 x 480 is at 60 Hz
t3dutil /r5	640 x 480 is at 85 Hz
t3dutil /r13	640 x 480 is at 120 Hz

-3/4,é,3,ì'2□®



-3/4,é,3,ì•ī□X,É,Â,ç,Ä

Total3DfOf%oftfBfbfNfc□[f<,Ä-3/4,é,3,ì'2□®,a%oÄ"\,Ä,□B

-3/4,é,3,ì'2□®□F

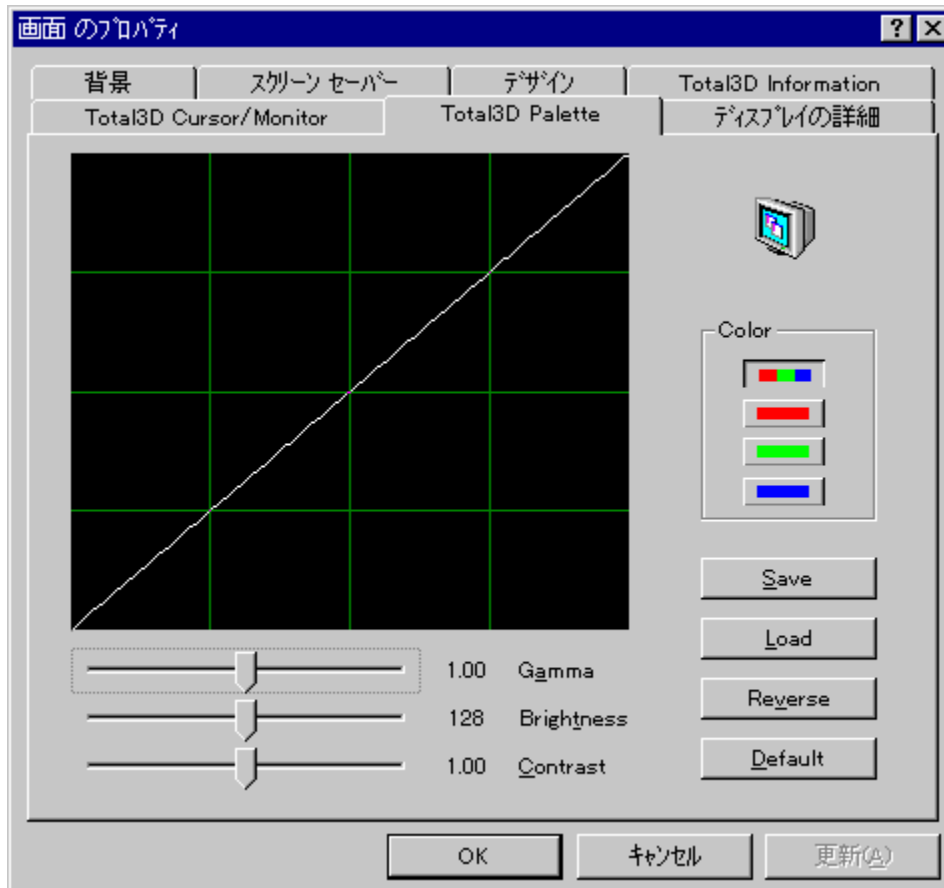
1. fRf"fgf□□[f<fpflf<,ì□g%oæ-Ê□h,ðfNfŠfbfN,μ,Û,□B
2. □gTotal3D Palette□hf^fu,ðfNfŠfbfN,μ,Û,□B
3. %oE'α,É, ,éjff%□[f{fbfNfX,Ä□gRGB(3□F□□hf{f^f",ðfNfŠfbfN, ,é,□□AAlt-wfL□[,ð%oÿ,μ,Û,□B
4. □^,ñ't,ìBrightnessfXfNf□□[f<fo□[,ð□¶%oE,ÉfXf%ofCfh,μ,Ä□A'²□®,μ,Û,□B
5. ,Û,½Alt-tfL□[,ð%oÿ,μ,Ä□Afj□[f<^'Ú" @fL□[,Ä□¶%oE,Éfo□[,ðfXf%ofCfh, ,é,±,Æ,³,Ä,«,Û,□B
6. □Y'è"à—e,ð•Û'¶,μ,½,ç,Æ,«,í□ASave,ðfNfŠfbfN,μ,Ä□A□Y'èftf@fCf<,É-¼'O,ð,Ä,~,Ä•Û'¶,μ,Ä,-
¾,³,ç□B
7. •Û'¶,μ,Ä, ,é□Y'è,ðŽg—p,μ,½,ç,Æ,«,í□ALoad,ðfNfŠfbfN,μ,Ä□A□Y'èftf@fCf<,ðCEÄ,Ñ□o,μ,Ä,-
¾,³,ç□B
8. •W□É,ì□Y'è,É-β,μ,½,ç,Æ,«,É,í□ADefault,ðfNfŠfbfN,μ,Ä,¾,³,ç□B
9. OK ,ðfNfŠfbfN,μ,Û,□B

□ÔA—î□AÄF,ì-3/4,é,3,ðCEÄ•Ê,É□Y'è,Ä,«,Û,□F

1. fRf"fgf□□[f<fpflf<,ì□g%oæ-Ê□h,ðfNfŠfbfN,μ,Û,□B

2. **gTotal3D Palette** hf^fu, ðfNfŠfbfN, μ, Ü, ·B
3. %E'α, É, , éjff%o[f{fbfNfX, ÅgO h g—Îh g g Å hf{f^f", ðfNfŠfbfN, ·, é, ©AALT-r, ALT-g, ALT-bfL[. ð%oÿ, μ, Ü, ·B
4. ^, ñ'†, iBrightnessfXfNf[f<fo[. ð%¶%oE, ÉfXf%ofCfh, μ, ÄA'²@, μ, Ü, ·B
5. , Ü, ½Alt-tfL[. ð%oÿ, μ, ÄAfj[f^f^'Ú" @fL[. Å¶%oE, Éfo[. ðfXf%ofCfh, ·, é, ±, Æ, ð, Å, «, Ü, ·B
6. Ý'è"à—e, ð•Ú'¶, μ, ½, ç, Æ, «, ÍASave, ðfNfŠfbfN, μ, ÄAÝ'èftj@fCf<, É-¼'O, ð, Ä, ¯, Ä•Ú'¶, μ, Ä, -, ¾, ³, çB
7. •Ú'¶, μ, Ä, , éÝ'è, ðŽg—p, μ, ½, ç, Æ, «, ÍALoad, ðfNfŠfbfN, μ, ÄAÝ'èftj@fCf<, ðCEÄ, Ño, μ, Ä, -, ¾, ³, çB
8. •W€ , ÍÝ'è, É-β, μ, ½, ç, Æ, «, ÍADefault, ðfNfŠfbfN, μ, Ä, , ¾, ³, çB
9. **OK** , ðfNfŠfbfN, μ, Ü, ·B

Gamma “Á«,ì•ïX



Gamma “Á«,ì•ïX,É,Â,ç,Ä

Total3DfOf%oftfBfbfNfc[f<,ÁGamma“Á«,ì'²@,ª%oÄ"\,Ä,·B

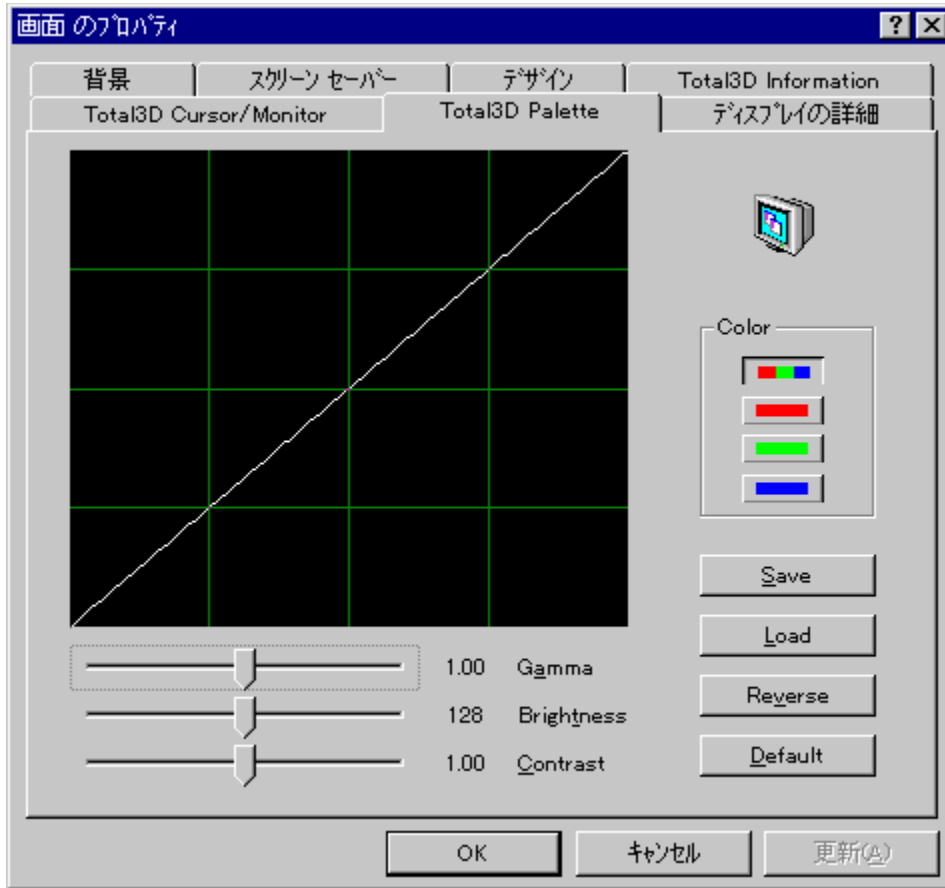
Gamma “Á«,ì'²@:

1. fRf“fgf[f<fpflf<,ìg%œ-Êh,ðfNfŠfbfN,μ,Û,·B
2. gTotal3D Palettehf^fu,ðfNfŠfbfN,μ,Û,·B
3. %oE'x,É, ,éjff%o[f{fbfNfX,ÁgRGB(3F[f^f“,ðfNfŠfbfN,·,é,©Alt-wfL[,ð%ÿ,μ,Û,·B
4. ^è”Ôä,ìGammafXfNf[f<fo[,ð%E,ÉfXf%ofCfh,μ,ÄA'²@,μ,Û,·B
5. ,Û,½Alt-afL[,ð%ÿ,μ,ÄAfj[f^f^U”@fL[,Ä%E,Éfo[,ðfXf%ofCfh,·,é,±,Æ,ª,Ä,«,Û,·B
6. Ý”è”à—e,ð•Û'¶,μ,½,ç,Æ,«,íASave,ðfNfŠfbfN,μ,ÄAY'èftf@fCf<,É-¼'O,ð,Ä,~,Ä•Û'¶,μ,Ä,-¾,¾,çB
7. •Û'¶,μ,Ä, ,éÝ”è,ðŽg—p,μ,½,ç,Æ,«,íALoad,ðfNfŠfbfN,μ,ÄAY'èftf@fCf<,ðEÄ,Ño,μ,Ä,-¾,¾,çB
8. •W€,ìÝ”è,É-ß,μ,½,ç,Æ,«,É,íADefault,ðfNfŠfbfN,μ,Ä,¾,¾,çB
9. OK ,ðfNfŠfbfN,μ,Û,·B

ÔA—îAÄ,ìGamma“Á«,ðEÄ•É,ÉÝ”è,Ä,«,Û,·F

1. fRf“fgf□□[f<fpflf<,l□g%œ-Ê□h,ðfNfŠfbfN,μ,Û,·□B
2. □gTotal3D Palette□hf^fu,ðfNfŠfbfN,μ,Û,·□B
3. %œE’α,É, ,éjff%□[f{fbfNfX,Â□g□Ô□h□g—Í□h□g□Â□hf{f^f“,ðfNfŠfbfN,·,é,©□AALT-r, ALT-g, ALT-bfL□[,ð%ÿ,μ,Û,·□B
4. ^è”Ô□ã,lGammafXfNf□□[f<fo□[,ð□¶%œE,ÉfXf%ofCfh,μ,Ä□A’²□@,μ,Û,·□B
5. ,Û,½Alt-afL□[,ð%ÿ,μ,Ä□AfJ□[f<^Ú“@fL□[,Â□¶%œE,Éfo□[,ðfXf%ofCfh,·,é,±,Æ,³,Ä,«,Û,·□B
6. □Y’è“à—e,ð•Û’¶,μ,½,ç,Æ,«,Í□ASave,ðfNfŠfbfN,μ,Ä□A□Y’èftj@fCf<,É-¼’O,ð,Ä,¯,Ä•Û’¶,μ,Ä,-,¾,³,ç□B
7. •Û’¶,μ,Ä, ,é□Y’è,ðŽg—p,μ,½,ç,Æ,«,Í□ALoad,ðfNfŠfbfN,μ,Ä□A□Y’èftj@fCf<,ðÆÄ,Ñ□o,μ,Ä,-,¾,³,ç□B
8. •W□€,Í□Y’è,É-β,μ,½,ç,Æ,«,É,Í□ADefault,ðfNfŠfbfN,μ,Ä,,¾,³,ç□B
9. OK ,ðfNfŠfbfN,μ,Û,·□B

fRf“fgf%ofXfg,ì'²□®



fRf“fgf%ofXfg,ì'²□®

Total3Dのf%oftfBfbfNfc□[f<,ÅfRf“fgf%ofXfg,ì'²□®,a%oÅ“\,Å,□B

fRf“fgf%ofXfg,ì'²□®□F

1. fRf“fgf□□[f<fpflf<,ì□g%oæ-Ê□h,ðfNfŠfbfN,μ,Û,□B
2. □gTotal3D Palette□hf^fu,ðfNfŠfbfN,μ,Û,□B
3. %oE'α,É, ,éjff%□[f{fbfNfX,Å□gRGB(3□F□□hf{f^f“ ,ðfNfŠfbfN, ,é,©□AAlt-wfL□[,ð%oÿ,μ,Û,□B
4. ^è”Ô%o°,ìContrastfXfNf□□[f<fo□[,ð□¶%oE,ÉfXf%ofCfh,μ,Å□A'²□®,μ,Û,□B
5. ,Û,½Alt-cfL□[,ð%oÿ,μ,Å□Afj□[f^f^Ú“ @fL□[,Å□¶%oE,Éfo□[,ðfXf%ofCfh, ,é,±,Æ,ª,Å,« ,Û,□B
6. □Y'è“à—e,ð•Û'¶,μ,½,ç ,Æ,« ,í□ASave,ðfNfŠfbfN,μ,Å□A□Y'èftj@fCf<,É-¼'O,ð,Å,~,Å•Û'¶,μ,Ä,-¾,¾,ç□B
7. •Û'¶,μ,Ä, ,é□Y'è,ðŽg—p,μ,½,ç ,Æ,« ,í□ALoad,ðfNfŠfbfN,μ,Å□A□Y'èftj@fCf<,ðCEÄ,Ñ□o,μ,Ä,-¾,¾,ç□B
8. •W□É,ì□Y'è,É-β,μ,½,ç ,Æ,« ,É,í□ADefault,ðfNfŠfbfN,μ,Ä,¾,¾,ç□B
9. OK ,ðfNfŠfbfN,μ,Û,□B

□Ô□A—î□A□Å□F,ìfRf“fgf%ofXfg,ðCEÄ•É,É□Y'è,Å,« ,Û,□F

1. fRf“fgf□□[f<fpflf<,ì□g%oæ-Ê□h,ðfNfŠfbfN,μ,Û,□B

2. **gTotal3D Palette** hf^fu, ðfNfŠfbfN, μ, Ü, ·B
3. %E'α, É, , éjff%o[f{fbfNfX, ÅgÖh—ÎhgÅhf{f^f“, ðfNfŠfbfN, ·, é, ©AALT-r, ALT-g, ALT-bfL[, ð%Ÿ, μ, Ü, ·B
4. ^è”Ö%º, ì**Contrast**fXfNf[f<fo[, ð¶%E, ÉfXf%ofCfh, μ, ÄA'²@, μ, Ü, ·B
5. , Ü, ½**Alt-cfL**[, ð%Ÿ, μ, ÄAfJ[f^<^Ú“ @fL[, Ä¶%E, Éfo[, ðfXf%ofCfh, ·, é, ±, Æ, Å, «, Ü, ·B
6. Ý'è“à—e, ð•Ú'¶, μ, ½, ç, Æ, «, í**ASave**, ðfNfŠfbfN, μ, ÄAÝ'èftj@fCf<, É-¼'O, ð, Ä, ¯, Ä•Ú'¶, μ, Ä, -, ¾, ³, çB
7. •Ú'¶, μ, Ä, , éÝ'è, ðŽg—p, μ, ½, ç, Æ, «, í**ALoad**, ðfNfŠfbfN, μ, ÄAÝ'èftj@fCf<, ðCEÄ, Ño, μ, Ä, -, ¾, ³, çB
8. •W€, ìÝ'è, É-β, μ, ½, ç, Æ, «, É, í**ADefault**, ðfNfŠfbfN, μ, Ä, , ¾, ³, çB
9. **OK** , ðfNfŠfbfN, μ, Ü, ·B

fgf%ofuf<fVf... [fefBf“fo

^È%º, ðfgf%ofuf<, ºN, ±, Á, ½ê±, Ìí^ -@, ðà-¾, µ, Ä, ç, Ü, ·B

fVfXfef€fNf%ofbfVf...

Windows 95f, [fh, Å, Ì•s<ï±

3Dí%ºž, Ì DOS fQ [f€, Å, Ì•s<ï±

3Dí%ºž, Ì Windows 95 (Direct3D) fQ [f€, Å, Ì•s<ï±

fnfCfXfLfff“3DfS [fOf<, Å, Ì•s<ï±

3DfTfE“fh, Ì•s<ï±

, Ç, µ, Ä, àí%ºž, º, Å, «, È, çfgf%ofuf<, º, ¶, ½žž, íAjjfm [fvfX, ðfefNfjjf<fTf| [fg, É, “-â, ç±, í, ¹, -
, ¾, ¾, çBfefNfjjf<fTf| [fg, Ì~A—±±æ, íu **Support Service Manual** /v, Ìu **ft [fU [fTf| [fg, É, Å, ç**
, Åv, ð, ²—, ¾, ¾, çB

fVfXfef€fNf%fbfVf...

'Êí,ìê†,Á,lfNf%fbfVf...

Q1. "É'RfVfXfef€,afNf%fbfVf..., ,éB

A1. Total 3D, ívf%ofo•fvf€fC,É'í%ož,µ,Ä,ç,Ü,·B Šg'£<@Ší,afvf%ofo•fvf€fC,É'í%ož,µ,Ä,ç,É,ç,ê††AIRQ,È,Ç,lfŠf[]fX,dfVfXfef€BIOSfZfbfgfAfbfv,ÅSm•Ü,µ,Ä,·,ç,ÄAfu[]fgŽž,Éf\ftfgfEjFfAfhf%ofCfo,É,æ,Á,ÅSm•Ü,³,è,éTfEf"fhfj[]fh,È,Ç,lfŠf[]fX,Æ[]d,È,ç,É,ç,æ,µ,É,·,é•K—v,ª,è,Ü,·B
 fVfXfef€,ì BIOSfZfbfgfAfbfv,ð<N"® ,µAfvf
 %ofo•fvf€fC,lfRf"ftfBfO,df'fFfbfN,µ,ÅŠg'£fj[]fh,ì,½,ß,lfŠf[]fX,ªSm•Ü,³,è,Ä,ç,é,©,Ç,µ,©,ðSm" F,µ,Ä,¾,¾,çB,Ü,½,±,è,É,Ä,ç,Ä,lfVfXfef€,lf}fjf...fAfç,à•K, ŽQ[]Æ,µ,Ä,,¾,¾,çB

,» ,é,Á,à-â'è,ª%oðCE^ ,µ,È,çê††:
 fRf"fgf[]f<f<fpf|f<,ìgfvfXfef€h"à,É ,éfffofCfXf}f[]fWff,df'fFfbfN,µ,Ä,-
 ,¾,¾,çB,à,µ,Ç,è,©,lfffofCfX,É%o©Ff,çŠÜ,É[]•,ì[]f}[]fN,ª,Ä,ç,Ä,ç
 ,½,ç[]AfEfBf"fhfEfY,lfwf<fv,É,µ,½,ª,Ä,Äf}[]fN,ðŽæ,è[]œ,ç,Ä,,¾,¾,çB,±,ì-â'è,É,í'½,-
 ,ìê††fffofCfX,ì£ê††,©ŠÖEW,µ,Ä,ç,Ü,·,ì,Ä[]AfEfBf"fhfEfY,lfgf%ofuf<fvf...
 []fefBf"fo,É,µ,½,ª,Ä,Ä£ê††,ð%oñ"ð,·,é,±,Æ,É,æ,Á,Ä%oðCE^ ,·,é,±,Æ,ª,Ä,« ,Ü,·B

Windows 95,ì"® []'t,ÉfNf%fbfVf...,ª<N,±,Á,½[]ê††

Q2. fCf"FXfg[]f<'t,ÉfVfXfef€,afNf%fbfVf..., ,éB

A2. fVfXfef€,É,æ,Á,Ä,íACE³,©,ç, ,éVGA,lfhf
 %ofCfoftf@fCf<[]gVGA.DRV[]h,ª[]AfCf"FXfg[]f<Žž,ÉfVfXfef€,dfNf%fbfVf...
 ,¾,¾,è[]Af[]fbfNfAfbfv,ð<N,±,µ,½,è,·,é,±,Æ,ª, ,è,Ü,·B,» ,ì,æ,µ,É[]ê††[]A^È
 %oº,ìžè[]†,É,µ,½,ª,Ä,Ä[]gVGA.DRV[]h,ð"ü,è'Ö,ì,Ä,,¾,¾,çB[]iVGA.DRVftf@fCf<,lfVfXfef€,Åžg—
 p,¾,è,Ä,ç,Ü,·,ì,Ä[]A,±,ìžè[]†,í'Êí Windows95 []ä,Ä[]s,µ,±,Æ,í,Ä,« ,Ü,¹,ñ[]

1. fVfXfef€,ðgRf}f"fhfvf[]f"fvfg[]hf,[]fh,Á,½,ž, ,°,éB[]i "dCE¹,ð"ü,è,Ä[]gStarting Windows 95h,lf[]fbfZ[]fW,ª•\Ž,³,è,½,ç[]A[]gF8[]hfL[][,ð%oÝ,µ,Ä,,¾,¾,çB[]f[]fj...[][,ª•\Ž,³,è,Ü,·,ì,Ä[]A[]gCommand prompt only[]h,ð'l,ñ,ÄENTER,ð%oÝ,µ,Ä,,¾,¾,çB[]
2. fhf%ofCfo[]f[]BfXfN[]gDISK1[]h,©,ç[]gVGA.DRV[]hftf@fCf<,dfRfs[][,µ,Ä[]AWindows95 ,ì SYSTEMftfHf<f_ÉfRfs[][,µ,Ü,·B —á,ì,í[]A

copy a:vga.driv c:\windows\system /y

,Æ,È,è,Ü,·B

3. fVfXfef€,ð[]Ä<N"® ,µ,Ü,·B

'[]: ,±,è,Á,à-â'è,ª, ,é[]ê††,í[]Afpf\frf",ð SAFef,[]fh,Á—š,ž[]ä,°,Ä,-
 ,¾,¾,çB"dCE¹,ð"ü,è,Ä[]gStarting Windows 95h,lf[]fbfZ[]fW,ª•\Ž,³,è,½,ç[]A[]gF8[]hfL[][,ð
 %oÝ,µ,Ä,,¾,¾,çB[]f[]fj...[][,ª•\Ž,³,è,Ü,·,ì,Ä[]A[]gSafe mode[]h,ð'l,ñ,ÄENTER,ð%oÝ,µ,Ä,,¾,¾,çB[]

Q3. fffXfNfgfbfv,ðVGAf,[]fh,Á"®,©,·,Æfnf"fofAfbfv,·,éB

A3. fVfXfef€,É,æ,Á,Ä,íAfCf"FXfg[]f<Žž,àVGAf,[]fh,Äf,fff^[][,ð"® ,©,µ,Ä,ç,é,Æ,« ,ÉfVfXfef€,afNf %ofbVf...,·,é,±,Æ,ª, ,è,Ü,·B,±,ìCE»Ü,í[]AIntel,ìPClf'fbfvfZfbfg82437FX[]@Step A-1,ðžg— p,µ,½f}fU[]f[]f{[]fh,Ä<N,±,è,±,Æ,ª, ,è,Ü,·B,±,è,ªCE^ ò,Æ[][,ì,ç,è,é[]ê††[]A^È%oº,ìžè[]†,É[] ,Ä,Ä[]gVGA.DRV[]h,ð"ü,è'Ö,ì,Ä,,¾,¾,çB[]iVGA.DRVftf@fCf<,lfVfXfef€,Åžg—p,¾,è,Ä,ç ,Ü,·,ì,Ä[]A,±,ìžè[]†,í'Êí Windows95 []ä,Ä[]s,µ,±,Æ,í,Ä,« ,Ü,¹,ñ[]

1. fVfXfef€ , ðgfRf}f“fhfvf[]f“fvfg[]hf, []fh, Å, 1/2, ç, , °, éB[]i “dCE¹, ð“ü, è, Ä[]gStarting Windows
95[]h, lf[]fbfZ[]fW, a·\Zi, 3, è, 1/2, ç[]A[]gF8[]hfL[][, ð%öY, µ, Å, , 3/4, 3, ç[]Bf[]ffj...[][, a·\
Zi, 3, è, Ü, , i, Å[]A[]gCommand prompt only[]h, ð‘l, ñ, ÅENTER, ð%öY, µ, Å, , 3/4, 3, ç[]B[]j
2. fhf%ofCfo[]lfffBfXfN[]gDISK[]h, ©, ç[]gVGA.DRV[]hftf@fCf<, ðfRfs[][, µ, Å[]AWindows95 , i
SYSTEMftfHf<_ÉfRfs[][, µ, Ü, ·[]B —á, i, i[]A

copy a:vga.driv c:\windows\system\y
,Æ,È,è,Ü, ·[]B
3. fVfXfef€ , ðÄ<N“ ® , µ, Ü, ·[]B

Q4. Windows95, ÅDOS‘<, ð—š, ç[]ã, °, é, Æfnf“fOfAfbfv, ·, é[]B

A4. Windows95, iŽž, É, æ, Á, Ä[]A[]fOf%oftfBfbfNf{[]fh—p, ÉŠm·Ü, µ, Å, , éf[]f, fŠfGfŠfA, ðf{[]fh, lfhf
%ofCfo, É~A—[]¹, , É“É‘R·i[]X, ·, é, ±, Æ, a, , è, Ü, ·[]B, ±, è, É, æ, Á, Ä^è“Ô%oe<ç, ðŽž, , à, ·, ç
, i, iVGA, i·”·a, Å, ·, i, Å[]ADOSfvf[]f“fvfg, àDOSfAfvfŠ, È, Ç, iVGAf, []fh, lfvf[]fOf%of€
, Åfnf“fOfAfbfv, a<N, ±, è, à, ·, ç[]A, Æ, ç, x, ±, Æ, È, È, è, Ü, ·[]B
, ±, i[]è[]#[]A%o, iŽžè[]#, É[]
, Á, Ä[]A[]f[]C[]f[]W[]f[]X[]f[]g[]f[]Š[]f[]G[]ff[]B[]f[]^[]i[]RegEdit.exe[]j, ðŽž, Á, Ä[]A[]f[]C[]f[]W[]f[]X[]f[]g[]f[]Š, ©, çffBfXfvf[]Cf[]fhf
%ofCfo, ð[]í[]œ, µ, Å, , 3/4, 3, ç[]B

f[]C[]f[]W[]f[]X[]f[]g[]f[]Š, i
" HKEY_LOCAL_MACHINE/Enum/PCI"
, ðŠj, , Ü, ·[]B
Vérité fOf%oftfBfbfNf`fbfv, ð“<[]Ú, µ, 1/2f{[]fh, lfGf“fgfŠ, i "VEN_1163&DEV_0001" , Æ, È, Á, Ä, ç, Ü, ·[]B, ±
, è, ð[]í[]œ, µ, Å, , 3/4, 3, ç[]B , Ü, 1/2[]A^1/4, ifffBfXfvf[]Cf[]ff[]of[]Cf[]X, lfGf“fgfŠ[]@fGf“fgfŠ[][, iVEN_????
&DEV_???? , Á^t, iClassfL[][, a[]gDisplay[]h, Æ, È, Á, Ä, ç, Ü, ·,) , à‘S, Ä[]í[]œ, µ, Å, , 3/4, 3, ç[]B

f[]C[]f[]W[]f[]X[]f[]g[]f[]Š[][, i
" HKEY_LOCAL_MACHINE/System/CurrentControlSet/Services/Class/Display"
, i^t, lfGf“fgfŠ, ð‘S, Ä[]í[]œ, µ, Å, , 3/4, 3, ç[]B

fVfXfef€ , ðÄ<N“ ® , µ, Å[]A[]Total3DfffBfXfvf[]Cf[]fhf%ofCfo, ðÄf[]Cf“fXfg[]f<, µ, Å, , 3/4, 3, ç[]B

DOSfAfvfŠ, iŽÀ[]s^t, ÉfVfXfef€, a[]Nf%ofb[]fvf..., ·, é[]è[]#[]B

fVfXfef€fNf%ofb[]fvf..., iCE^‘ö, i‘a·”·a, iVérité, lfhf%ofCfo, Æ^1/4, i[]»·i, lfhf
%ofCfo, Æ, i[]Ö“É, É, æ, Á, Ä<N, ±, è, Ü, ·[]B ^È%o, É[]ADOSfAfvfŠ, iŽÀ[]s^t, ÉfNf%ofb[]fvf...
, a, , <, 1/2, Æ, <, i^í[]^—@, ðŠð, Å, ©Ži, µ, Å, ç, Ü, ·[]B

Q5. EMM386^ÈŠO, if[]f, fŠf}f[]f[]Wff[][, ðŽž, Á, Ä, ç, ÄfNf%ofb[]fvf..., a, , <, é[]B

A5. DOS, i 3D^í%žfQ[]f€, i[]AŠi—{“i, ÉEMM386^ÈŠO, if[]f, fŠf}f[]f[]Wff, Å, i“ @[]i, i·Ü[]Ø, µ, Å, ç
, Ü, 1, ñ[]B ^è“É, É[]A“Á·É, Éf[]f, fŠ[]f}f[]f[]Wff[][, lfQ[]f€, ð, ·, é[]ã, Å, i·K—v, , è, Ü, 1, ñ, i, Å[]A[]f[]f, fŠ[]f}f[]f[]
Wff[][, ðEMM386, É·i[]X, µ, Å, , 3/4, 3, ç[]B

Q6. UniVBE, à Display Doctor, Æ^è[][], É“®, ©, µ, Å, ç, ÄfNf%ofb[]fvf..., ·, é[]B

A6. , ±, è, ç, lfhf%ofCfo, i VESA 2.X VGA/SVGA f[]Cf“f^[]ftfF[]fX, ð[]A, ±, lfCf“f^[]ftfF[]fX, ð“ö, i, Å, ç
, È, çfOf%oftfBfbfNff[]of[]CfX, É‘ñ<Y, ·, é, 1/2, ß, i, à, i, Å, ·[]BTotal3D, iBIOS, iVESA2.X, É^í%ž, µ, Å, ç
, é, 1/2, ß[]A, ±, è, ç, lfhf%ofCfo[][, i·K—v, , è, Ü, 1, ñ[]B, 3, ç, É, ±, è, ç, lfff[]of[]CfX, i^É[]i, i“ @[]i, ÉŠ±[]Ä, µ, Å, -
, é, 1/2, ß[]AfvfXfef€fnf“fOfAfbfv, iCE^‘ö, É, È, é, ±, Æ, a, , è, Ü, ·[]BTotal3D, ð, 2~—
p, i[]Ü, É, i[]AAUTOEXEC.BATftf@fCf<, ©, ç, ±, è, ç, lfhf%ofCfo, ð[]í[]œ, µ, Å, , 3/4, 3, ç[]B

Windows95f, [fh, Å, Ì • s < i ð †

Q1. [, % ð ' œ " x , Ì i VGA ^ È Š O , Ì j j ' Y ' è , ð , Å , « , È , † B

A1. Windows95, Ì [% Š ú , Ì fo [fWf † f " , Å , Í A Total3D , Ì fff of CfX , ð PCI fRf " ft fBf of C E [fVf † f " , Å [3 , µ , -
" F Ž , 3 , è , È , † , ± , Æ , ð , è , Ü , · B , » , Ì ê [† AVGAfhf % of Cfo , ð Š , , è " - , Å , ç , è , Å Afhf
% of Cfo , ð fCf " fXfg [f < , 3 , è , ½ C E ã , à VGAfhf % of Cfo , ð Ž c , Å , Å [3 , µ , † fhf % of Cfo , È Š ± [Å , · , é , ± , Æ , ð , è , Ü , · B
B [i , ± , è , ð C E ^ ö , Å fNf % of b fVf . . . , · , é , ± , Æ , à , è , Ü , · j
 , ± , Ì ê [† A % ð , Ì Ž è [† , È []
 , Å , Å A f C E fWfXfgfŠ fGfffBf ^ [i RegEdit.exe [j , ð Ž g , Å , Å A f C E fWfXfgfŠ , © , ç fffBfXfvf C E fCfhf
 % of Cfo , ð [í [œ , µ , Å , , ¾ , ¾ , † B

f C E fWfXfgfŠ , Ì
" HKEY_LOCAL_MACHINE/Enum/PCI"
 , ð Š j , - , Ü , · B
Vérité fOf % of t fBf b fNf ' f b f v , ð " < [Ú , µ , ½ f { [[fh , Ì fGf " fgfŠ , Ì " VEN_1163&DEV_0001" , Æ , È , Á , Ä , † , Ü , · B , ±
 , è , ð [í [œ , µ , Å , , ¾ , ¾ , † B , Ü , ½ [A ' ¼ , Ì fffBfXfvf C E fCfff of CfX , Ì fGf " fgfŠ [(fGf " fgfŠ [, Ì VEN_????
&DEV_???? , Å ' † , Ì ClassfL [, ð g Display [h , Æ , È , Á , Ä , † , Ü , ·) , à ' S , Å [í [œ , µ , Å , , ¾ , ¾ , † B

f C E fWfXfgfŠ [, Ì
" HKEY_LOCAL_MACHINE/System/CurrentControlSet/Services/Class/Display"
 , Ì ' † , Ì fGf " fgfŠ , ð ' S , Å [í [œ , µ , Å , , ¾ , ¾ , † B

fVfXfef€ , ð [Ä < N " © , µ , Å A Total3DfffBfXfvf C E fCfhf % of Cfo , ð [Ä fCf " fXfg [f < , µ , Å , , ¾ , ¾ , † B

3D'Í%žDOSfQ[f€ ,Á, ì • s < i †

Q1.fQ[f€%œ-É,ÉADMA,ª-³CEØ,É,É,Á,½,Æ,ç,xfbfZ[fW,ª,Á,éB,Ü,½,ÍfQ[f€ ,ì"® ,« ,ª,Ç,ª,à'x,Š´,ŕ,éB

**A1.Á%œ,ÉADOS,İŠÂ«•İ" ,ÁADMA,İXfe[f^fX,đf`fFbfN,µ,Ä,,¾,¾,çB
DOSfvf"fvfg,ÅSET,Æ"ü-Í,·,é,ÆŠÂ«•İ" ,İ^ê-—,ª·\
Ž! ,³,ê,Ü,·B,» ,İ't ,©,çASPEEDY3D_DMA,Æ,ç,ª·\Ž! ,đ'T,µ,Ä,,¾,¾,çB,±,İ"Žš,ª 0 ,à,µ,,ÍOFF ,Æ·\
Ž! ,³,ê,Ä,ç,½,çADMA,đ-³CEØ,É,·,é,æ,ªY'è,³,ê,Ä,ç,Ü,·B,±,İ"İ" ,İADOS fvf"fvfg.Å
set speedy3d_dma=
,Æ"ü-Í,·,é,±,Æ,ÁY'è,Ä,« ,Ü,·B,½,¾,¾,µA, "Ž ,ç,İfVfXfe€ ,ªfofXf}fXf^fŠf"fo,đTf|
[fg,µ,Ä,ç,É,çê†ADMA,İŽg,İ,Ü,¹,ñ,İ,Á'Ó,µ,Ä,,¾,¾,çB**

,±,ê,É,æ,Á,ÄfQ[f€fXfs[fh,ª' -, ,È,Á,½,ê†ASPEEDY3D_DMA ,ª SET ,³,ê,Ä,ç
,éêŠIAUTOEXEC.BAT ,à,µ,,ÍfQ[f€ŠÓEW,İfofbf`ftf@fCf< ,İ'tj ,đ'T,µ,ÄAset
speedy3d_dma=,İs,đ·İX,µ,Ä,,¾,¾,çB

,±,ê,É,æ,Á,ÄfQ[f€,ªfNf%ofbfVf... ,µ,½,è"® ,« ,ª, " ,©,µ,,È,Á,½,è,µ,½,ê†A, "Ž ,ç,İfVfXfe€
,ªfofXf}fXf^fŠf"fo,đTf|[fg,µ,Ä,ç,É,ç%Ō"« ,ª , , ,È,è,Ü,·,İ,ÁAfVfXfe€,İ»'çŽÓ,É~A—
 ,µ,ÄBIOS,İfAfbfvfOfCE[fh,đŽó, , ,é,É,Ç,µ,Ä,,¾,¾,çB

Q2.fQ[f€'t,É Error20 ,Æ,ç,xfbfZ[fW,ªo,é

**A3.Error20,Í Total3Df{[fh,à,µ,,Í DOS 3D,İfhf%ofCfo,İ%Šú%œ» ,É-â'è,ª ,Á,½,±
,Æ,đŽ! ,µ,Ü,·B,³,ç,ÉSubfR[fh,ª·\Ž! ,³,ê,½,ê†A •â'« ,Á,» ,İ"Ó†,đf`fFbfN,µ,Ä,Ý,Ä,-
,¾,¾,çBSubfR[fh,ª·\Ž! ,³,ê,È,©,Á,½,ê†AfQ[f€f[fj ,İTf|[fg,É, " -â.ç†,í,¹,¾,¾,çB**

Q3.fQ[f€'t,É Total3D,İGf%œ[,ª·\Ž! ,³,ê,éB

A3.Appendix3,đf`fFbfN,µ,Ä,,¾,¾,çB

3D 'í%ž Windows 95 (Direct3D) fQ [f€, Á, ì•s<i] ‡

Q1. fQ [f€, ì"®, «, ¢, Ç, ¢, à'x, Š', ¶, é B

A1. Direct3D 'í%ž, }fQ [f€, ì', É, í Afñ [fhfE fF Af Af Nf Zf % f CE [fVf ‡f", ð"Á, É•K—v, Æ, ·, é, à, ì, ¢, , è, Ü, ·
BfQ [f€, ìf} fff... fAf<, ðŽQ [Æ, µ, Ä Afñ [fhfE fF Af Af Nf Zf % f CE [fVf ‡f", ð—LCEø, É, µ, Ä, , ¾, ¾, ç B

DOS (BIOS), ÅfTf|[]lfg, -, é%øð'œ"x,ÆŽü"g", ì^ê---

%øð'œ"x	□F□"	56	60	fŠftfœfbfVf...fœ[]fg			85	120
				70	72	75		
320x200	256		□				□	
	64K		□				□	
	16M		□				□	
320x240	256		□				□	
	64K		□				□	
	16M		□				□	
384x288	256		□			□		
	64K					□		
	16M					□		
400x300	256	□	□					□
	64K	□	□					□
	16M	□	□					□
512x384	256					□	□	□
	64K					□	□	□
	16M					□	□	□
640x400	256		□			□	□	□
	64K		□			□	□	□
	16M		□			□	□	□
640x480	256		□			□	□	□
	64K		□			□	□	□
	16M		□			□	□	□
768x576	256		□			□	□	
	64K		□			□	□	
	16M		□			□	□	
800x600	256	□	□			□	□	
	64K	□	□			□	□	
	16M		□			□	□	
1024x768	256		□			□	□	
	64K		□			□	□	
	16M							
1152x864	256		□			□	□	
	64K		□					
	16M							
1280x1024	256		□			□		
	64K							
	16M							

DOSf,[]fh,lfŠftfœfbfVf...fœ[]fg,ÍT3dutil.exeft[]fBfŠfB,ðŽg—p,μ,ÄÝ'è,Å,«,Ü,·□B
T3dutil.exeft[]fBfŠfB,ÍgTotal3D Drivers and Applications CD-
ROM□h,ìToolsffBfœfNfgfS[][,É, ,è,Ü,·□B

Windows 95, ÅfTf|[]lfg, ·, é%øð'œ"x,ÆŽü"g[], ì^ê---

Windows95, Å, í640x480^È%øº, ì%øð'œ"x, ífTf|[]lfg, µ, Ü, ¹, ñB

%øð'œ"x	[]F[]"	fŠftfÆfbfVf...fÆ[]lfg						
		56	60	70	72	75	85	120
640x480	256		□		□	□	□	□
	64K		□		□	□	□	□
	16M		□		□	□	□	□
800x600	256		□		□	□	□	
	64K		□		□	□	□	
	16M		□		□	□	□	
1024x768	256		□	□		□	□	
	64K		□	□		□	□	
	16M		□	□		□	□	
1152x864	256		□	□		□	□	
	64K		□	□		□	□	
	16M		□	□		□	□	
1280x1024	256		□			□		
	64K		□			□		
	16M		□			□		

fŠftfÆfbfVf...fÆ[]lfg, ì·ïX

Windows 95 DirectX ,ÅfTf|[]fgr,-,é%øð'œ"x,ÆŽü"gr",ì^ê---

%øð'œ"x	[]F[]"	fŠftf[]fbfVf...f[]fgr						
		56	60	70	72	75	85	120
320x200	256(modeX)			☐				
	64K		☐				☐	
	16M		☐				☐	
320x240	256(modeX)		☐					
	64K		☐				☐	
	16M		☐				☐	
512x384	256					☐	☐	☐
	64K					☐	☐	☐
	16M					☐	☐	☐
640x400	256		☐			☐	☐	☐
	64K		☐			☐	☐	☐
	16M		☐			☐	☐	☐
640x480	256		☐		☐	☐	☐	☐
	64K		☐		☐	☐	☐	☐
	16M		☐		☐	☐	☐	☐
800x600	256		☐		☐	☐	☐	
	64K		☐		☐	☐	☐	
	16M		☐		☐	☐	☐	
1024x768	256		☐	☐		☐	☐	
	64K		☐	☐		☐	☐	
	16M		☐	☐				
1152x864	256		☐	☐		☐	☐	
	64K		☐	☐		☐	☐	
	16M							
1280x1024	256		☐			☐		
	64K		☐			☐		
	16M							

• â'«

Appendix 1: [fTf|\[\]fg,μ,Ä,ç,éfrfflf,\[\]fh," ,æ,ÑfŠftfœfbfVf...fœ\[\]fg](#)

[DOS \(BIOS\)](#)

[Windows 95](#)

[Windows 95 DirectX](#)

Appendix 2: ['í%ž,μ,Ä,ç,È,çfVfXfef€](#)

Appendix 3: [Error Codes](#)

‘Í%ož,μ,Ä,ç,È,çfVfXfef€

Total3D ,ì□S‘ÿ•”,Å, ,é Verité V1000fOf%oftfBfbfNf`fbfv,í□A,Ù,Æ,ñ,Ç,lfVfXfef€,É‘Í%ož,μ,Ä,ç
,Ü,·,ª□A,Ü,ê,É‘Š□«,î^« ,çfVfXfef€,ª‘¶□Ý,μ,Ü,·□B,» ,í,æ,κ,ÉfVfXfef€,í□A%oä□X,ì•û,Å”-
œ©,μ,¾,ç‘ŠŽè,lf□□[f]□□[,Æ,à<|—í,μ,Ä‘Í%ož,Å,« ,é,æ,κ,É“w—í’v,μ,Ä,¨ ,è,Ü,·□B,Ü,½□A‘Í%ož,Å,« ,È,ç
,±,Æ,ðŠm”F,μ,½fVfXfef€,É,Ä,ç,Ä,í□A□□Žž,¨ “š,|,ª,Å,« ,é,æ,κ,É‘í□^ ,³,¹,Ä,ç,½,¾,ç
,Ä,¨ ,è,Ü,·,ª□A,¨ <C•t,« ,ì“ _ ,ª,²,´ ,ç,Ü,μ,½,ç□A•¾ŽĐ,Ü,Å,²~A—□,¾,³,ç□B

Error Codes

Total3D,É,ÍŽ©ĈÈĦf,đ□s,α,½,β,łTfuf<□[f" f",^ag,Ý□ž,Ü,ê,Ä," ,è□AfGf%□[,ì□Ú,É□Ú,μ,ç□ó<μ,đfGf%□[fR□[fh,ìĈ` ,Å\Ž| ,·,é,±,Æ,^aÄ,« ,Ü,·□B

fGf%□[fR□[fh,âŽ| ,³ê,½,Æ,« ,í□AfR□[fh,ì"Ô□t,đ□T,|,Ä%□^o,ì•\,đŽQ□Æ,μ,Ä,,³/₄,³,ç□BfefNfjff<fTf|□[fg,Ö~A—□,·,é,æ,α,É,©,©,ê,Ä,ç,é□ê□†,í□A<i"i"l,É□ó<μ□iŽg—pŠÄ<«□A%□Y,μ,½fL□[,ì□†"Ô"™□j,đ□T,|,½□ă,Ä,²A—□,μ,Ä,ç,½,³/₄,,Æ□A,æ,èŠmŽÄ,ÈfTf|□[fg,đ□s,α,±,Æ,^aÄ,« ,Ü,·,ì,Ä□A,²<|—ì,đ,"Šè,ç,ç,½,μ,Ü,·□B

Table 1: Error Code •

	fGf%□[fR□[fh %□đ□à / 'í□^•û-@
10	f`fFbfNfTf€fGf%□[fefNfjff<fTf □[fg,É~A—□,μ,Ä,, ³ / ₄ , ³ ,ç□B
20	f{□[fh□%□Šú%□>fGf%□[•\,QfGf%□[SubfR□[fh•\,đŽQ□Æ,μ,Ä,, ³ / ₄ , ³ ,ç□B
30	f}fCfNf□fR□[fh,ìfo□[fWf†f", ^a fAfvfŠfP□[fVf†f",Æ^ê'v,μ,Ü, ¹ ,ñ□B □ ³ ,μ,çf}fCfNf□fR□[fhftf@fCf<, ^a fQ□[f€,ìfffBfCfNfgfŠ,©,à,μ,,í ŠÄ<«•i□" SPEEDY3D = ,ÄŽw'è, ³ ê,éfffBfCfNfgfŠ,É, ,é,±,Æ,đŠm" F,μ,Ä,, ³ / ₄ , ³ ,ç□BfefNfjff<fTf □[fg,É~A— □,μ,Ä,, ³ / ₄ , ³ ,ç□B
40	f□f,fŠ□[fAf□fP□[fVf†f" fGf%□[Total3D,ìRAM,đf}fbfv,·,é,æ,α,Éf□f,fŠ□[,ì"z'u, ^a Ä,« ,Ü, ¹ ,ñ,Ä,μ,½□BfefNfjff<fTf □[fg,É~A— —□,μ,Ä,, ³ / ₄ , ³ ,ç□B
50	Windows95—p,ìfhf%□fCfo"Totl3D.vxd",à,μ,,í"verite.vxd" , ^a Ĉ©,Ä,©,ç,È,©,Á,½,©ĈÄ,- ,È,Ä,Ä,ç,Ü,·□B Total3D Windows95 fhf%□fCfo,đ□ÄfCf"fXfg□[f<,·,é,©□ADOSf,□[fh,Ä<N"® ,μ,Ä,, ³ / ₄ , ³ ,ç□B

Table 2: Error Subcode •

	SubfR□[fh %□đ□à / 'í□^•û-@
1	Windows95—p,ìfhf%□fCfo"Totl3D.vxd",à,μ,,í"verite.vxd" , ^a Ĉ©,Ä,©,ç,È,©,Á,½,©ĈÄ,- ,È,Ä,Ä,ç,Ü,· Total3D Windows95 fhf%□fCfo,đ□ÄfCf"fXfg□[f<,·,é,©□ADOSf,□[fh,Ä<N"® ,μ,Ä,, ³ / ₄ , ³ ,ç□B
2	DOS,ìf□f,fŠfZfCfNf^ , ^a « ,è,È,ç,©□ADOS,ìf□f,fŠ,ìfŠf□[fX, ^a « ,è,Ü, ¹ ,ñ□B fQ□[f€f□□[f□[,ìfTf □[fg,É~A—□,μ,Ä,, ³ / ₄ , ³ ,ç□B
3	VPDfGf%□[Total3D f{□[fh,É-â'è, ^a ,é%□Ä"□<, ^a ,è,Ü,·□BfefNfjff<fTf □[fg,É~A—□,μ,Ä,, ³ / ₄ , ³ ,ç□B
4	frrfflf,□[fh•Ú"¶fGf%□[Total3D f{□[fh,É-â'è, ^a ,é%□Ä"□<, ^a ,è,Ü,·□BfefNfjff<fTf □[fg,É~A—□,μ,Ä,, ³ / ₄ , ³ ,ç□B
5	Vérité RISCfGf%□[Total3D f{□[fh,É-â'è, ^a ,é%□Ä"□<, ^a ,è,Ü,·□BfefNfjff<fTf □[fg,É~A—□,μ,Ä,, ³ / ₄ , ³ ,ç□B
6	f}fCfNf□fR□[fhf□□[fhfGf%□[□ ³ ,μ,çf}fCfNf□fR□[fhftf@fCf<, ^a fQ□[f€,ìfffBfCfNfgfŠ,©,à,μ,,í ŠÄ<«•i□" SPEEDY3D =

- ,ÅŽw'è,³,è,éfffBfCEfNfgfŠ,É, ,é,±,Æ,đŠm" F,μ,Ä,,³/₄,³,ç□BfefNfjffj<fTf|□[fg,É~A—
□,μ,Ä,,³/₄,³,ç□B
- 7 Vérité RISCfXf^□[fg^Ù□í
Total3D f{□[fh,É-â'è,^a, ,é%oÅ"□«,^a, ,è,Ü,·□BfefNfjffj<fTf|□[fg,É~A—□,μ,Ä,,³/₄,³,ç□B
- 8 f}fCfNf□fR□[fh,^a"¹/₂%ož,μ,Ä,ç,È,ç
Total3D f{□[fh,É-â'è,^a, ,é%oÅ"□«,^a, ,è,Ü,·□BfefNfjffj<fTf|□[fg,É~A—□,μ,Ä,,³/₄,³,ç□B
- 9 f}fCfNf□fR□[fh,ìfo□[fWf#f" ,^afAfvfŠfP□[fVf#f" ,Æ^è'v,μ,Ü,¹,ñ
□³,μ,çf}fCfNf□fR□[fhftf@fCf< ,^afQ□[f€,ìfffBfCEfNfgfŠ,©,à,μ,,í
ŠÅ<<•í□" SPEEDY3D =
,ÅŽw'è,³,è,éfffBfCEfNfgfŠ,É, ,é,±,Æ,đŠm" F,μ,Ä,,³/₄,³,ç□BfefNfjffj<fTf|□[fg,É~A—
□,μ,Ä,,³/₄,³,ç□B
- 10 NULLf,□[fhfGf%o□[
Total3D f{□[fh,É-â'è,^a, ,é%oÅ"□«,^a, ,è,Ü,·□BfefNfjffj<fTf|□[fg,É~A—□,μ,Ä,,³/₄,³,ç□B
- 11 Vérité , ©,ç,ìff□[f^"Ç,ÝŽæ,è,^af^fCf€fAfEfg,³,è,Ü,μ,¹/₂
fAfvfŠfP□[fVf#f" ,ìfGf%o□[,©□A,à,μ,,ìfVfXfef€,ì□Y'è,Éf~fX,^a, ,è,Ü,·□B f\
ftfgfEfffA,^a□³,μ,fCf" fXfg□[f<,³,è,Ä,ç,é,±,Æ,đŠm" F,μ,Ä□AfpffRf" ,đ□Ä<N" ®,μ,Ä,-
,³/₄,³,ç□B

fncfXfLfff“3DfR□[fOf<,iŽg,č•û

fncfXfLfff“3DfS□[fOf<,ifZfbfgfAfbfv

fncfXfLfff“3DfS□[fOf<,i,μ,,Ý

fncfXfLfff“3DfS□[fOf<,iŽg—p,É,,½,Á,Ä

fncfXfLfff“3DfS□[fOf<,iŠÇ—□

fgf%ofuf<fVf...□[fefBf“fO

fnfCfXfLfff“3DfS□[fOf<,lfZfbfgfAfbfv

fnfCfXfLfff“3DfS□[fOf<,lfCf“fXfg□[f<

1. 3DfS□[fOf<,lfP□[fuf<,δTotal3DfOf%oftfBfbfNfj□[fh,É,Â,ç,Ä,ç
,é□,çRfIfNf^□if,fjf^□[RfIfNf^,©,ç^ê”Ô—f,ê,½,Æ,±,ë,É, ,é'[Žq□j,É□Ú'±,μ,Ä,,¾,¾,ç□B

fppfRf“,ì“dCE¹,ð“ü,ê,½□ó'Ô,ÅfS□[fOf<,ð□Ú'±,,é,Æ□ALCD fVffffbf^□[,ªŠj,ç
,½,è•Ä,¶,½,è,μ,í,¶,β,Ü,·□BfppfRf“,ì“dCE¹,ª“ü,Ä,Ä,ç,é, ,ç,¾,í,,Ä,Æ,±,ì□ó'Ô,Ä,·□B,±,ì□ó'Ô,Ä-
â'è,í, ,è,Ü,¹,ñ,ª□A<C,É,É,é□ê□‡,lfQ□[f€,ð,μ,Ä,ç,É,ç,Æ,«,lfS□[fOf<,ðfppfRf“,©,ç,í,,μ,Ä,,¾,¾,ç□B

,Ü,½□AfQ□[f€,ðŠjŽn,,é,Æ,«□A□Å□%o,É,T-10•bŠÔ,Ü,ç,Ü,¾,ç—í—l,ªCE©,í,é,±,Æ,ª, ,è,Ü,·□B“dCE¹,
ð□Ø,Ä,½,Æ,«,ª3DfS□[fOf<,ð—{‘ì,©,ç,í,,μ,½,Æ,«,É,à“¯,¶,æ,æ,É,à,ì,ªCE©,í,Ü,·,ª□A—â'è,í, ,è,Ü,¹,ñ□
B

fQ□[f€,ðfvfCEfc,,é

fnfCfXfLfff“3DfS□[fOf<,É,æ,è□A3D,lfQ□[f€,ðŠy,μ,p,±,Æ,ª□o—^,Ü,,ª□A,±
,lfS□[fOf<,í“Á'è,lfQ□[f€□iLCD BIOSfo□[fWf#“1.21,É'î%ž,μ,½fQ□[f€□j,Ä,ì,YŽg—
p,Ä,«,Ü,·□BTotal3D,É,í□A'î%ž,,é□Q□[f€,ª2—{□iDescent#U□FDestination Quartzon , ,æ,Ñ
Whiplash□j•t'®,,μ,Ä,ç,Ü,·□B

fnfCfXfLfff“3DfS[fOf<,ì,μ,,Ý

fXfefCEfifXfR[fvfrfWf†f“,Æ3D

, ,È,½,²Žü,è,ðCE©,Ä,ç,é,Æ,«AŽÄÜ,É,Í2-‡,ÌŠG,ð“ª,Ì†,Å1-‡,É‡‡-,μ,ÄCE©,Ä,ç,Ü,·B%œ-
Ú,Æ‡‡-Ú,Í,»,ê,¼,ê”÷-,É^á,Á,½ŠG,ðCE©,ÄA,»,ÌŠG,Í”],É’-,ç,ê3ŽŸCE³,Ì-š’ì
%œf’œ,É‡‡-,³,ê,Ü,·B

‡;Ü,Ä,ÌfrffifQ‡[f€,Ä,ÍAfxfnfš‡[f“,É^ê,Ä,ÌŠG,μ,©ŽÉ,μ‡o,·,±
,Æ,Í,Ä,«,Ü,¹,ñ,Ä,μ,½‡B,μ,½,ª,Ä,ÄA-š’ÌŠ’,ð‡o,·,½,β,É¹¼,Ì,ç,è,ç,è,È•û-@,ª,Æ,ç,è,Ä,«,Ü,μ,½‡B
-á,Ì,Ì%œ“,·,Ì,à,Ì,Í‡-,³,‡Afsf“fg,ð,Ú,©,μ,ÄA<β,·,Ì,à,Ì,ð,»,Ì‡ä,É‡d,È,Ä’â,«,‡A,Í,Ä,«,è,ÆŽÉ,·,±
,Æ,É,æ,Ä,Ä%œ“<βŠ’,ð‡o,μ,½,è,μ,Ä,ç,Ü,μ,½‡B

,μ,©,μ‡AfnfCfXfLfff“3DfS[fOf<,ðŽg-p,·,é,±,Æ,É,æ,Á,ÄA,æ,èŽ©’R,É<β,ç‡A”——Í,Ì, ,é,RŽŸCE³
%œf’œ,ð‡ì,è‡o,·,±,Æ,ª,Ä,«,Ü,·B

fnfCfXfLfff“,RDfS[fOf<,ì,μ,,Ý

,RDfS[fOf<,É’Ì%œž,μ,½fQ‡[f€,ÍA’S,Ä,Ì%œæ-È,ÄA%œE-Ú,Æ‡‡-Ú,Ì“ñ,Ä,ÌŽ<“_,©,çCE©,½,Q-‡,Ì
%œf’œ,ðCEðCEÝ,É%œf,μ‡o,μ,Ü,·B”ñ‡ì,É’-,çfXfs‡[fh,ÄCEðCEÝ,É^Ú,·,½,β‡A,»,Ì•Ì
%œ»,ðŠá,Ä,Æ,ç,Ì,é,±,Æ,Í,Ä,«,Ü,¹,ñ‡B

,RDfS[fOf<,É,Í-¼-Ú,Éfvffbf^‡[·,ª,Ä,ç,Ä,ç,ÄA
%œE,©,ç,ÌŽ<“_,ÌŽž,Í‡‡,Ìfvffbf^‡[·,ª,“,è‡A‡‡,©,ç,ÌŽ<“_,ÌŽž,Ì%œE,Ìfvffbf^‡[·,ª,“,è,é,æ,α,É,È,Ä,Ä,ç
,Ü,·B,±,Ì“®‡ì,ð,·,Ì,â,‡s,α,±,Æ,É,æ,Ä,ÄAŽÄÜ,ÉfQ‡[f€,Ì†,É,ç,é,æ,α,ÈCEðCEi,ð-Ú,ÄCE©,é,±
,Æ,ª%œÄ“\,É,È,é,Ì,Ä,·B

fnfCfXfLfff“3DfS□[fOf<,iŽg—p,É, ,½,Á,Ä

fnfCfXfLfff“3DfS□[fOf<,i,žg—p,É, ,½,Á,Ä□A,č,.,Ä,©,lf|fCf“fg,ª, ,è,Ü,·□B

Žü•Ó,iŠÄ«

1. CEuCEö“•,ì□^%º,ÄŽg—p,μ,É,č,æ,π,É,μ,Ä,,¾,¾,č□B
2. -Ú,É,È,¶,p,æ,π,É□Af,fff^□[,ì-¾,é,¾,âfRf“fgf%ofXfg,ð’²□@,μ,Ä,-¾,¾,¾,č□B□if,fff^□[,ì’²□@,É,Ä,č,Ä,í□Af,fff^□[,lf}fff...fAf<,ðŽQ□AE,μ,Ä,,¾,¾,¾,č□B□j
3. ,É,é,x,fŠftfCEfbfVf...fCE□[fg,ðã,°,ÄŽg—p,μ,Ä,,¾,¾,¾,č□B

ftfŠfbfj□[□i%ºæ-Ê,ì,ç,Ä,«□j,ðCE, ,ç,·

3DfS□[fOf<,ðŽg—p,μ,½,Æ,«,É□A%ºæ-Ê,É,ç,Ä,«,ªCE©,ì,Ä□A-Ú,ì”æ~j,ð,ðŠ’,¶,é,±,Æ,ª, ,è,Ü,·□B, ».,ì,æ,π,É,±,Æ,ª<N,±,Ä,½□ê□±,í□A^È%º,ì□à-¾,ð“Ç,ñ,ÄŽwŽ!,É,μ,½,ª,Ä,Ä,,¾,¾,¾,č□B

ftfŠfbfj□[,ì<N,±,éCE^ö

ftfŠfbfj□[,ì<N,±,é□Ä,à^â,«,ÈCE^ö,í□ATotal3D,ì□,¼fŠftfCEfbfVf... fCE□[fg,ì□Y’è,É,æ,é,à,ì,Ä,·□B□,¼fŠftfCEfbfVf...fCE□[fg,Æ,í□A%ºæ-Ê,ª□ã %ºº•ûCEü,É□’,«Š,ì,ç,é,é’-,¾i/•b□j,ðŽw,μ,Ü,·□BfŠftfCEfbfVf...fCE□[fg,lf,fff^□[,É,æ,Ä,Ä•\ Ž!,Ä,«,é’l,ª^á,π,½,ß□AfOf%ºftfBfbfNf{□[fh,ì□%ºSú□Y’è,Ä,í□A,æ,è’½,lf,fff^□[,É’í%ºž,Ä,«,é,æ,π ,É□AfŠftfCEfbfVf...fCE□[fg,í’á,ß,É□Y’è,¾,é,Ä,č,Ü,·□B

3DfS□[fOf<,ðŽg—p,¾,é,é□ê□±□A,±,lfŠftfCEfbfVf...fCE□[fg,ì^á,č ,ìŽü^í,iŠÄ«,Æ,àŠÖ~A,μ,Ä□ACE©,ì,©,½,É’â,«,%ºe<ç,μ,Ü,·□B,â,â”-^Ä,čŠÄ«,Ä,í□AfŠftfCEfbfVf... fCE□[fg,ª70Hz,Ä,à•□’É,í, ,Ü,è•%º’S,ÉŠ’,¶,é,±,Æ,í, ,è,Ü,¹,ñ,ª□A-¾,é,čCEð□iCEuCEö“•,ì□^ %ºº,É,Ç□j,ì,à,Æ,Ä,í70Hz,Ä,í%ºæ-Ê,ª,ç,Ä,č,Ä-Ú,É•%º’S,ðŠ’,¶,é□[,ª’□,ì,Ä,«,Ü,·□BfŠftfCEfbfVf... fCE□[fg,ª100Hz^È□ã,É,É,é,Æ□AftfŠfbfj□[,ì<N,±,ç, ,□A,Ü,Æ,ñ,Ç,ì□[,í•%º’S,ðŠ’,¶,é,±,Æ,í, ,è,Ü,¹,ñ□ B

’□: ,Ü,è,É□A¼,ì□[,æ,è,à,ç,Ä,«,É’í,μ,Ä•qŠ’,È’ìž,ðŽ□,Ä,½□[,à,č,Ü,·□B,à,μ,²Ž©•ª,ª,»π ,Ä, ,é•û,í□A%º,ìžè□±,É,μ,½,ª,Ä,Ä%ºæ-Ê,ð□Ä“K%º»,μ,Ä,-¾,¾,¾,č□B,μ,©,μ□ACE»Y,ì□ó’Ô,Ä,ç,Ä,«,ª<N,±,Ä,Ä,č,É,č□A, ,é,č,í•%º’S,ÉŠ ’,¶,ç,é,È,č□ê□±,ì□Y’è,ð,».,ì,Ü,Ü,É,μ,Ä,, ,±,Æ,ð,“Š©,ß,μ,Ü,·□B

ftfŠfbfj□[,ðCE, ,ç,·,É,í

1. Žü,è,ì□A-¾□i“Á,ÉCEuCEö“•□j,ð□Á, ,æ,π,É,μ,Ä,,¾,¾,¾,č□B
2. fŠftfCEfbfVf...fCE□[fg,ð□,,ß,É□Y’è,μ,Ä,,¾,¾,¾,č□B DOSf,□[fh,lfŠftfCEfbfVf... fCE□[fg,íT3dutil.exeft□[fefBfŠfefB,ðŽg—p,μ,Ä□Y’è,Ä,«,Ü,·□B T3dutil.exeft□[fefBfŠfefB,í□gTotal3D Drivers and Applications CD-ROM□h,ìToolsfffBfCEfnfgfŠ□[,É, ,è,Ü,·□B.

f,fff^□[,ª’í%ºž,μ,Ä,č,é,È,čfŠftfCEfbfVf...fCE□[fg,ð100`120Hz,ì, ,ç,¾,Ä□Y’è,μ,Ä,-¾,¾,¾,č□B120Hz^È□ã,ì’l,É□Y’è,μ,Ä,à%ºæ-Ê,ìž,ª—ž,ç,é,¾, ,ÄftfŠfbfj□[,É,í%ºe<ç,μ,Ü,¹,ñ□B

’□^ÓŽ-□€:

f,fff^□[,ª’í%ºž,μ,Ä,č,é^È□ã,lfŠftfCEfbfVf...fCE□[fg,É□Y’è,·,é,Æ□ACEì□á,ìCE ^ö,É,È,è,Ü,·□B□Y’è,ð□s,π’O,É□A•K, ,f,fff^□[,ìžd—l,ðŠm”F,μ,Ä,,¾,¾,¾,č□B

fnfCfXfLfff“3DfS[fOf<,iŠÇ—

fnfCfXfLfff“3DfS[fOf<,Šy,μ,Ý,ç,½,¾,,½,ß,É[AŽŸ,ì,±,Æ,đŽç,é,æ,α,É,μ,Ä,,¾,¾,çB

Žg—pã,ì’^Ó

3DfS[fOf<,í, -š<@ŠB,Å,·,ì,Å[A—\,É^μ,í,È,ç,æ,α,É,μ,Ä,,¾,¾,çB

fffof“,ì†,È,Ç,É,»,ì,Ü,Ü,ì’ó’Ô,Å“ü,ê,È,ç,æ,α,É’^Ó,μ,Ä,,¾,¾,çB

%o^,Ô,Æ,«,É,Í[AŠÉÖP[i•z,È,Çj,Å•i,ñ,ÅŽ,ž%o^,Ô,æ,α,É,μ,Ä,,¾,¾,çB

,Ü,±,è,âŽ¼<C,ì’½,ç,Æ,±,ë,É’u,©,È,ç,æ,α,É,μ,Ä,,¾,¾,çB

ftfÆ[f€,đ<È,°,½,è%o,,î,μ,½,è,μ,È,ç,æ,α,É,μ,Ä,,¾,¾,çB

fÇf“fY,É,ð,đ,Â,¯,½,è,μ,È,ç,æ,α’^Ó,μ,Ä,,¾,¾,çB

fNfŠ[fjf“fo

fÇf“fY,đ,Ó,,Æ,«,É,Í[A—nÜ,È,Ç,ÍŽg—p,μ,È,ç,æ,α,É,μ,Ä,,¾,¾,çB_ç,©,ç•z,đ,μ...
,Å,É,ç,μ,Ä[A,ä,Á,,è[@,,æ,α,É,μ,Ä,,¾,¾,çB

fgf%ofuf<fVf...[]fefBf“fo

3DfS[]fOf<,lŽg—pŽž,É<N,±,è,â,·,çfgf%ofuf<,Æ,»,l%ođCE^—@,đ,ç,,Â,©,²D%oî,μ,Û,·:

Q1.3DfS[]fOf<,lfVfffbf^[]L,²[]Ø,è‘Ö,í,ç,È,ç

A1. ^È%o,ì,±,Æ,đŠm,©,β,Ä,,¾,¾,ç[]F

3DfS[]fOf<—p,ìŠG,²%oæ-Ê,É•\Ž|,¾,è,Ä,ç,é[]B

Žg—p’t,lfQ[]f€,² LCD BIOS1.21,“,æ,Ñ VESA1.2frfff[]f,[]fh,É’î%ž,μ,Ä,ç,é[]B[]ifQ[]f€ ,lfpfbfP[]fW,ì<L[]Ú,đŠm”F,μ,Ä,,¾,¾,ç[]F

Q2.%oæ-Ê,É,ç,Ä,«,²CE©,!,é

A2. ^È%o,ì‘€[]ð,“,±,È,Á,Ä,Ý,Ä,,¾,¾,ç[]F

%oÄ”\,ÈCEÀ,è[]A•”%o@,ì-¾,©,è,đ—Ž,Æ,μ,Ä,,¾,¾,ç[]iCEuCEö“•,í“Á,É[]B

f.fjf^[]L,lfRf“fgf%ofXfg,đ[]ã,°,Ä,,¾,¾,ç[]B

f.fjf^[]L,ì-¾,é,¾,đ%o,°,Ä,,¾,¾,ç[]B

ŽQ[]Æ[]FftfŠfbf[]L,đCE,,ç,·,É,Í .

Q3.%ođ‘œ“x,²[]ã,°,ç,è,È,ç[]B

A3. ^È%o,ì,±,Æ,đŠm,©,β,Ä,,¾,¾,ç[]F

f.fjf^[]L,²[],ç%ođ‘œ“x,đfTf[]f[]fg,μ,Ä,ç,é[]B

fQ[]f€,²[],ç%ođ‘œ“x,đfTf[]f[]fg,μ,Ä,ç,é[]B

Q4.3DfS[]fOf<,lfVfffbf^[]L,ì“@,«,²,±,ç,È,ç

A4. ,±,è,ÍCPU,²fQ[]f€^ÈŠO,[]^—,ÉŽžŠÔ,đŽæ,ç,è,Ä,ç,é[]ê[]±,É”[]¶,μ,Û,·[]B“Á,ÉWindows95,ÌMS-DOSf{fbfNfX,ÄfQ[]f€,đ,μ,Ä,ç,é,Æ,«,É[]A,±,ìCE»[]Ú,²,æ,<N,è,Û,·[]B

,±,ì[]ê[]±,ÍWindows95,đ[]l—¹,μ,Ä[]ADOS,©,çfQ[]f€,đfvfCEfC,μ,Ä,Ý,Ä,,¾,¾,ç[]F

’[]: 3DfS[]fOf<,đŽg—p,·,éfQ[]f€,ÍDOSf,[]fh,Ä[]A“K,ì”@[]ì,đ[]s,x,æ,x,É[]Ý’è,¾,è,Ä,ç,Û,·[]B

Q5.MS-DOSf,[]fh,É[]Ø,è‘Ö,!,½,Æ,«,ÉCD-ROM,ÉfAfNfZfX,Ä,«,È,ç

A5. Windows95,ÄŽg—p,·,éCD-ROMfhf%ofCfo,ÆMS-DOSf,[]fh,ÄŽg—p,·,éCD-ROMfhf %ofCfo,í•É,ì,à,ì,È,ì,Ä[]AMS-DOSf,[]fh,ÄŽg—p,·,éCD-ROMfhf%ofCfo,đfCf“fXfg[]f<,·,é•K—v,², ,è,Û ,·[]BfCf“fXfg[]f<,ì•ú-@,É,Ä,ç,Ä,Í[]AWindows95CD,ÌMS-DOSfwf<fvftf@fCf<,đ^É %o,ìŽè[]±,ÄŽQ[]Æ,μ,Ä,,¾,¾,ç[]F

1 Windows 95,đ<N“@,μWindows 95 CD,đfZfbfg,μ,Û,·[]B

2 []gCD,ìŽQ[]Æ[]h,đfNfŠfbfN,μ,Û,·[]B

- 3 [Other](#)
- 4 [Oldmsdos](#)
- 5 [HELP.com](#)
- 6 [fvftf@Cf,ŠJ,«,Ü](#)

3D Stereo Sound, **İŽg,ç•û**

3D Stereo Sound,İfZfbfgfAfbfv

Audio Controlft[]fefBfŠfefB,İŽg,ç•û

fgf%∞fuf<fVf...[]fefB“fO

3D Stereo Sound, **İfZfbfgfAfbfv**

Total3D,É,İSpatializer® ,İ 3DfXfefCEflfTf%ofEf“fh-f|fXfgfvf|fZfbfT,ª“<□Ú,³,ê,Ä,ç,Ü,·□B ,±,ê,É,æ,è□A,“Ž□,ç,İfTfEf“fhf{□[fh,İ%º¹,ð”——Í,İ, ,é3ŽYCE³fXfefCEflfTfEf“fh,É•İŠ·,·,é,±,Æ,ª,Å,«,Ü,·□B

,“Ž□,ç,İfTfEf“fhf{□[fh,ÆfXfs□[fj□[,ðTotal3D,É□Ú‘±,·,é,É,Í:

1. Total3D •t’® ,İfXfs□[fj□Ú‘±fR□[fh,ð—p^Ó,μ,Ü,·□B
2. fTfEf“fhf{□[fh,İ□gLine Out□h’[Žq,ÉfR□[fh,ð□Ú‘±,μ,Ü,·□B (ŠÔ^á,Á,Ä□gSpeaker Out□h’[Žq,É□Ú‘±,μ,È,ç,æ,ª,É’□^Ó,μ,Ä,,³/₄,³,ç□B)
3. ,» ,İfR□[fh,İ”½’Í”¼,ðTotal3Df{□[fh,İ□gLine In□h’[Žq,É□Ú‘±,μ,Ü,·□B
4. Total3Df{□[fh,İ□gLine Out□h’[Žq,ðfXfs□[fj□[,Æ□Ú‘±,μ,Ü,·□B

’□□FTotal3DfTfEf“fh,ðŽg—p,·,é,É,Í□A“Æ—š“dCE¹,ðŽ□,Á,½fXfs□[fj□[,ª•K—v,Ä,·□B

□Ú‘±,ª□I—¹,μ,½,çAudio Control ft□[fefBfŠfefB,ð<N“® ,μ,Ä,,³/₄,³,ç□B

ŽQ□Æ□F **Audio Controlft□[fefBfŠfefB,İŽg,ç•ú**

Audio Control

How to use the Audio Control icon:

1. Right-click the Audio Control icon in the system tray.
2. **Audio Control...**
3. Audio Control



How to use the Audio Control icon:

Right-click the Audio Control icon in the system tray. **Audio Control...**

Audio Control

3D Sound Mode
Mode: Stereo Source Mono Source Disable
Level: High Medium Low
OK Cancel(C)

fgf%ofuf<fVf... [fefBf“fo

Total 3DfTfEf“fh, ðŽg—pŽž, É<N, ±, è, â, ·, çfgf%ofuf<, Æ, »; ð%ðCE^—@, ð, ç, , Â, ©, ²Ð%ôî, µ, Ü, ·:

Q1.%o¹,ª••, ±, ¡, È, ç, © [A, à, µ, , Í [¬, ³, ·, ¬, é

A1.

fXfs [fj] [L,ª“Æ—§“dCE¹, ðŽ [Á, Ä, ç, é, ©, Ç, æ, ©Šm“F, µ, Ä, , ¾, ¾, ç [B

fRf“fgf [f<fpf] f<, ð [gf} f<f` f [fffBfA [h, Å%o¹—Ê, ðÝ’è, ðŠm“F, µ, Ä, , ¾, ¾, ç [B

Q1.%o¹Žž,ª^« , ç

A1.

fTfEf“fhfj [fh, ð [gLine Out [h [i [gSpeaker Out [h, Å, Í, È, [j, ÉTotal3D,ª [Ú’±, ³, è, Ä, ç, é, ±, Æ, ðŠm, ©, ß, Ä, , ¾, ¾, ç [B

Audio Controlft [fefBfŠfefB, ðfCEfxf<, ð%oº, °, Ä, Ý, Ä, , ¾, ¾, ç [B

ŽQ [Æ [F [Audio Controlft \[fefBfŠfefB, ðŽg, ç •û](#)

